



**Owner Communities**

Bridgton  
Cape Elizabeth  
Casco  
Cumberland  
Falmouth  
Freeport  
Gorham  
Gray  
Harrison  
Hollis  
Limington  
Lyman  
North Yarmouth  
Portland  
Pownal  
Scarborough  
South Portland  
Waterboro  
Windham  
Yarmouth

Jim Guerra  
Director MCSWC  
90 Union St.  
Rockland, ME 04856

February 17, 2016

RE: MSW RFP

Dear Jim:

**ecomaine** is pleased to submit herein two options for the Mid-Coast Solid Waste Corporation (MCSWC) regarding proposed tipping fees for Municipal Solid Waste (MSW) to be processed by **ecomaine**.

**ecomaine** is wholly owned and operated by the twenty southern Maine communities listed on this letterhead. **ecomaine** currently serves the disposal and recycling needs of a total of fifty five towns.

**Associate Members**

Baldwin  
Hiram  
Naples  
Parsonsfield  
Porter  
Saco  
Standish

**ecomaine** is proposing to offer Municipal Solid Waste processing services at our Waste-to-Energy Plant in Portland. We are pleased to have the opportunity to offer our MSW processing services to MCSWC as the corporation explores future disposal options for it's solid waste. Because MCSWC has requested tipping fees for terms of 5, 10 and 15 years, post 2018, the price that we can guarantee at the present time for such terms is at a rate of \$70.50 per ton, which is the current rate that our 20 owner municipalities pay for the processing of their MSW. This rate could be locked in (plus annual CPI increases not to exceed 7% any given year) for a term of anywhere from 5- 20 years.

**Contract Members**

Andover  
Augusta  
Brownfield  
Carmel  
Chebeague Island  
Cornish  
Eliot  
Etna  
Glenburn  
Greenland, NH  
Jay  
Kittery  
Limerick  
Livermore Falls  
Manchester  
Monmouth  
Newburgh  
Newington, NH  
North Haven  
Old Orchard Beach  
Poland  
Readfield  
Sanford  
Stetson  
Stockton Springs  
Swan's Island  
Waterville  
Wayne

As an aside, **ecomaine** is currently offering a MSW tipping fee of \$57.85 cents per ton (plus annual CPI increases not to exceed 7% any given year) for terms of Three (3) years to Five (5) years should MCSWC wish to take advantage of this rate.

**ecomaine** does not own trucks or haul material, but will work with any hauler MCSWC deems in it's best interest to hire. We have however procured 3 hauling quotes for your convenience. All rates are from MCSWC to **ecomaine**.

**1. Wyndsaung Farm & Trucking (WFT):** Haul rate is \$33.00 per ton (assuming 18, 20 or 22 tons per load, this equals a per haul rate of \$594, \$660 or \$726)

**2. Thomaston Recycling Inc:** \$475 per haul with an additional fuel surcharge of \$25.00 per trip for each increment of +.50 cents increase if gas exceeds \$3.50 per gallon

**3. Troiano Waste Services:** \$625.00 per haul plus fuel surcharge for 60 yard roll offs  
\$550.00 per haul plus fuel surcharge for live floor trailers

\*\*The Troiano fuel surcharge starts when fuel rises above \$3.25 per gallon

\*\*The Troiano formula for Fuel Surcharge for Long Hauls is calculated:

**Total Miles:** 166 for the round trip haul divided by **AVG Mile Per Gallon** of 4.5 gallons gives **Gallons Used**= 37 x difference in cost of fuel above \$3.25per gallon (for example: if fuel is \$3.50) you would have 37 gallons x .25 cents= +\$9.25 fuel surcharge per trip.

**ecomaine** is a unique facility compared to others in Southern Maine. More than just our municipally owned structure, more than our single sort recycling facility, more than our desire to provide you with the most comprehensive customer service available, we are proud to be the only waste/recycling facility in Maine with the distinction to be both ISO 14001 and OHSAS 18001 certified. Our 14001 certification is for environmental excellence, while 18001 is for safety. Meeting the rigorous standards necessary to achieve these certifications demonstrates proof of our environmental and safety performance and commitment. We believe this is something our member towns can really feel good about.

We also offer a comprehensive Education and Community Outreach program supported by our Business Development, Public Relations and Environmental Program Managers. The programs are **free of cost** and can be completely customized to meet the needs and challenges of the communities that MCSWC serves

Thank you for taking the time to consider working with **ecomaine** to process the MSW generated by the residents. If you need additional information or have further questions, please feel free to contact me at your convenience.

Respectfully,

Lissa Bittermann  
Business Development Manager

# **Mid-Coast Solid Waste Corp.**



## **Detailed Proposal for Municipal Solid Waste**

**Provided By:**

**eco**maine

**Written By:**

**Lissa Bittermann, Business Development Manager**

**February 17, 2016**

ecomaine supports the EPA and The State of Maine's hierarchy of waste management:

# **Table of Contents:**

**Section A - Processing Facilities** (pg. 3)

**Section B - Operational Details** (pg. 4)

**Section C - Acceptance of Materials** (pg. 6)

**Section D - Qualifications of Responder** (pg. 7)

**Section E - Record Keeping & Reporting** (pg. 10)

**Section F - Municipal Solid/ Bulky Waste/ C & D** (pg. 11)

**Section G - Educational Outreach** (pg. 13)

**Section I - Environmental Profile** (pg. 14)

**Section J - Acceptable Waste Lists** (pg. 16)

**Sample Waste Contract**

**ecomaine** supports the EPA and The State of Maine's hierarchy of waste management:

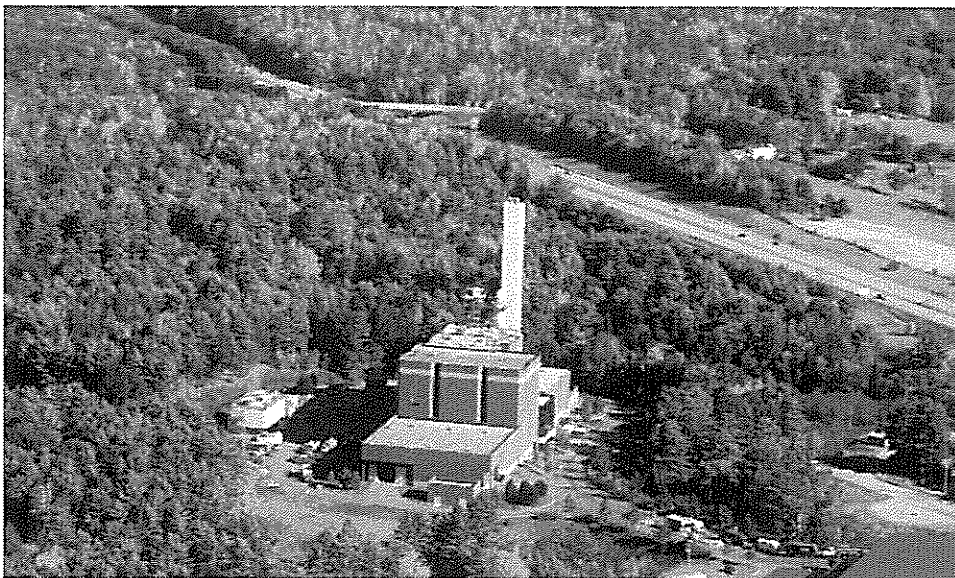
## **Section A - Processing Facilities**

### *Present Operations:*

**ecomaine**, formerly Regional Waste Systems, is a non-profit waste management company owned and operated by 20 municipalities in Southern Maine. With the additional 35 associate and contract member communities, **ecomaine** provides services to a combined population of more than 350,000. We are dedicated supporters of recycling and environmental protection, as evidenced by our ISO 14001 certification for excellence in environmental management. **ecomaine** started operation in 1975. The waste to energy facility was completed in 1987. This facility is a mass-burn waste to energy processing plant that processes 550 tons of MSW per day. **ecomaine** processes approximately 182,000 tons of waste each year and, from that process, produces enough steam to generate 14 megawatts of electricity annually (enough to power two of our facilities plus 10,000-15,000 homes annually).

Our three waste management facilities—a waste-to-energy plant, a recycling operation and a landfill/ashfill site—are located 82 miles from the Mid-Coast Solid Waste Corporation (MCSWC) facility just west of the Maine Turnpike at Exit 46.

**ecomaine** began operation of its state of the art single-sort recycling facility on May 1, 2007. The recycling system processes 18 tons of single-sort material per hour, currently this equates to approximately 42,000 tons of material annually.



**ecomaine** supports the EPA and The State of Maine's hierarchy of waste management:

## **Section B – Operational Details**

### *Delivery Location & Description:*

**ecomaine** proposes to begin accepting MSW upon expiration of Mid-Coast Solid Waste Corporation's current contract(s). All material, to include municipal solid waste (MSW) and possibly Bulky Waste, would be delivered to **ecomaine** located at 64 Blueberry Road, Portland Maine. Because **ecomaine** is a waste to energy facility, we can accept Bulky items but this does not include all items traditionally found in Demo and Construction debris.



### *ecomaine Hours of Operation & Holiday Schedule*

The **ecomaine** facilities are open for deliveries of waste and recycling as follows:

Waste to Energy: Monday through Friday from 6:00 am to 5:00 pm; Saturday 6:00AM to 1:00PM

Recycling Facility: Monday through Friday from 6:00 am to 4:30 pm,

**ecomaine** observes the following holidays.

Closed All Day:

**ecomaine** supports the EPA and The State of Maine's hierarchy of waste management:

- New Years Day - January 1st
- Independence Day- July 4th
- Thanksgiving- The fourth Thursday of November
- Christmas- December 25th

Early Closings:

- Labor Day- Closing at 1:00PM
- Memorial Day- Closing at 1:00PM
- Veterans Day- Closing at 1:00PM

The **ecomaine's** Recycling facility will occasionally open on select Saturdays to accommodate curbside collection, in light of how some holidays fall during the week. This determination is made each year and on a case by case basis.

*CPRC Riverside Hours of Operation & Holiday Schedule*

Summer Hours: Monday through Saturday from 7:00 am to 4:00 pm

Winter Hours: Monday through Saturday from 7:00 am to 3:30 pm

**CPRC Riverside** observes the following holidays.

Closed All Day:

- New Years Day - January 1st
- Independence Day- July 4th
- Thanksgiving- The fourth Thursday of November & following Friday
- Christmas- December 25th
- Labor Day
- Memorial Day
- Martin Luther King Day
- Presidents Day
- Patriots Day
- Columbus Day
- Veterans Day

Early Closings:

- December 24th- Closing at 12:00PM

*Contact US*

**ecomaine** can be contacted by:

Mail: **ecomaine**

64 Blueberry Road  
Portland Maine 04102

Telephone: 207-773-1738

Fax: 207-773-8296

Email: [info@ecomaine.org](mailto:info@ecomaine.org) or [bittermann@ecomaine.org](mailto:bittermann@ecomaine.org)

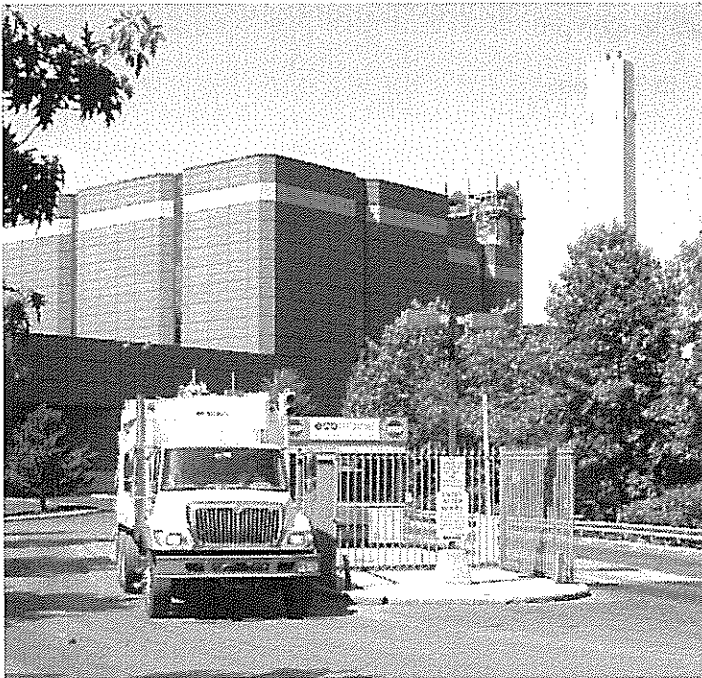
ecomaine supports the EPA and The State of Maine's hierarchy of waste management:

Our Website: [www.ecomaine.org](http://www.ecomaine.org)

For a list of employees and email addresses please visit our website at:  
<http://www.ecomaine.org/aboutus/index.shtm>

Scale Availability:

ecomaine operates two scales to provide for gross and tare weights and to provide a simple and consistent traffic flow through the facility. The scales are located on either side of the scale house at the entrance to the waste to energy facility. They are two 70 foot Gabriel hydraulic scales.



## Section C – Acceptance of Materials

Delivery Vehicle Restrictions & Limitations:

ecomaine is equipped to accept materials in all industry standard collection vehicles. ecomaine's scales are equipped to weigh vehicles up to 70 feet in length.



**ecomaine** supports the EPA and The State of Maine's hierarchy of waste management:

Delivery Process Narrative:

Waste

Vehicles entering **ecomaine's** facility will proceed to the scale house located in the center of the driveway entrance to the waste to energy facility. In the process of weighing the truck, drivers will be asked to state the name of the municipality/facility where waste was collected. Once weighed, the truck will proceed into the waste tipping hall. The load will be dropped on the floor, and the truck will exit to the out-bound scale. Once weighed out, the driver will be given asked to sign the weight ticket. The driver will be given one copy of the weight ticket and the scale house will keep a copy.

Guaranteed Service

**ecomaine** owns and operates three facilities, all located within a two mile area off exit 46 off Interstate 95.

- Single-sort Recycling Facility- 64 Blueberry Road, Portland Maine
- Waste To Energy Facility- 64 Blueberry Road, Portland Maine
- Ashfill/Landfill Facility- 85 Scott Drive, South Portland Maine

In the event of an equipment or facility shutdown, **ecomaine** has availability of an outdoor site for additional storage capacity to ensure continued acceptance of material without interruption. If necessary, materials can be staged at the 85 Scott Drive location. The close proximity of this location will ensure no significant travel time or delays in delivery of materials. In our history, we have had past incidences; however, **ecomaine** has never redirected a truck to another facility due to shutdown or equipment failure. It is our goal to provide top quality and dependable customer service to all our customers.

## **Section D – Qualifications of Responder**

Incorporation:

**ecomaine** is a State of Maine corporation. As a quasi-municipal non-profit corporation, **ecomaine** is owned and operated by 20 Maine municipalities and is governed by a 29 member board of directors. In addition to the full Board, **ecomaine** has an Executive Committee, Recycling Committee, Finance Committee, and Audit Committee. For a list of Board members go to:

**ecomaine** supports the EPA and The State of Maine's hierarchy of waste management:

<http://www.ecomaine.org/aboutus/directors.shtm>

The full Board and Executive Committee meetings are held the third Thursday of each month and are open to the public. For agendas and minutes for these meetings, go to: <http://www.ecomaine.org/agendas/index.shtm>

Financial Resources:

**ecomaine** is owned and operated by its 20 owner municipalities. If deemed necessary, **ecomaine** would be willing to provide copies of its most recent audit and financial information upon request.

Personnel and Project Management:

Lissa Bittermann will be contact person for the MCSWC for the purposes of this proposal. Detailed below are the names and qualifications of our staff.

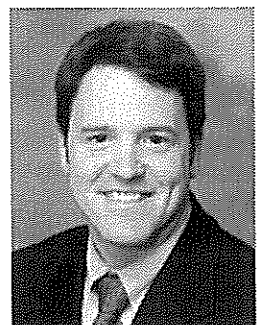


**Lissa Bittermann, Business Development Manager:**

Lissa is a graduate of the University of New Hampshire and joined **ecomaine** in September of 2012. She brings 16 years of sales and recruiting experience from both the International Travel and Bio-Pharmaceutical industries; as well as 3 years of experience in fund raising and Operations for Boston GreenFest (the largest environmental festival in New England). She is responsible for signing on new towns in Maine and New Hampshire to process their recyclable and Municipal Solid Waste at **ecomaine** as well as working with the Environmental Program Manager to increase awareness within our member communities about the benefits of Recycling and Waste to Energy.

**Kevin Roche, CEO & General Manager:**

As the result of a nationwide search, Kevin joined **ecomaine** in 2004. He has 19 years of experience in solid waste management including Director of Solid Waste for Broome County (New York), Materials Recovery Administrator for the Town of Glendale (Arizona), Manager for Metro Waste (Rochester, NY), Owner of MRF, Inc., a recycling facility in Rochester, New York, and Solid Waste Coordinator for both Monroe County and the Town of Rochester (New York). Kevin is a 1989 graduate of the University of Buffalo, where he received a Bachelor of Science degree in

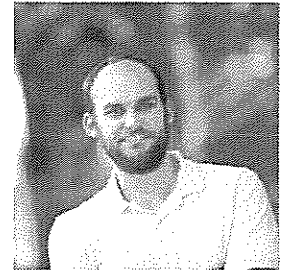


**ecomaine** supports the EPA and The State of Maine's hierarchy of waste management:

geography and urban planning. He also holds an associate degree in business administration.

**Leo Maheu, Environmental Program Manager**

Leo Maheu joined **ecomaine** in 2012 as a full-time Environmental Program Manager, devoting his time to education in **ecomaine** schools, community organizations, and other groups who want to learn more about sustainability as it relates to recycling and waste management. He is a California native, with roots in Connecticut and Maine, who moved to Maine in 2009 for the chance to work on environmental issues through AmeriCorps. During that time and since he worked as an Environmental Educator at the Rachel Carson National Wildlife Refuge, The Urban Land Trust and Portland Trails before joining **ecomaine**. Leo is an Eagle Scout and a graduate of Chico State, (CA).



Municipal Contact/Reference List

Municipality	Contact	Title	Phone #
Andover	Susan Merrow	Transfer Station Manager	773-7951
Baldwin	Terry Day	Admin. Assistant	625-4663
Bridgton	Mitchell Berkowitz	Town Manager	647-8786
Cape Elizabeth	Bob Malley	Director Public Works	799-4151
Casco	David Morton	Town Manager	627-4515
Cornish	Diane Harrington	Clerk	625-4324
Cumberland	William Shane	Town Manager	829-5559
Eliot	Joel Molton	Director Public Works	439-9451
Falmouth	Jay Reynolds	Director Public Works	781-3919
Freeport	Peter Joseph	Town Manager	865-4743
Gorham	David Cole	Town Manager	839-5037
Gray	Steven Lavallee	Director Public Works	657-3381
Greenland, NH	Craig Daigle	Transfer Station Manager	(603) 431-7111
Hampton, NH	Mark Richardson	Transfer Station Coordinator	(603) 929-5930
Harrison	George Finch	Town Manager	583-2241
Hiram	Terry Day	Admin. Assistant	625-4663
Hollis	Ben Severance	Selectman	929-8552
Jay	Ruth Cushman	Town Manager	897-6785
Kittery	Mary-Ann Conroy	Commissioner of Public Works	439-0333
Limerick	Joanne Andrews	Transfer Station Manager	793-2166
Limington	Darryl Hubbard	Selectman	637-2171
Lyman	Steve Marble	Transfer Station Manager	247-3797

**ecomaine** supports the EPA and The State of Maine’s hierarchy of waste management:

Manchester	Patrick Gilbert	Town Manager	622-1894
Monmouth	Herb Whittier	Public Works Director	933-2206
Naples	Derik Goodine	Town Manager	693-6364
Newington, NH	Karen Anderson	Town Administrator	(603) 431-7111
North Haven	Doug Record	Recycling Committee Chairman	867-2299
North Yarmouth	Marnie Diffin	Town Manager (Interim)	829-3705
Old Orchard Beach	Larry Meade	Asst. Town Manager	934-5714
Parsonsfield	Doug Hawkins	Selectman	625-4558
Poland	Bradley Plant	Town Manager	998-4601
Porter	Chester Chapman	Selectman	625-3349
Portland	Troy Moon	Solid Waste Director	874-8801
Pownal	Johnathan Morris	Selectman	688-4431
Readfield	Stefan Pakulski	Town Manager	685-1818
Saco	Mark Johnston	Mayor	284-6710
Livermore Falls	Krystal Flagg	Town Manager	897-3321
Sanford	Charlie Andreson	Director Public Works	608-4136
Scarborough	Michael Shaw	Public Works Director	883-4301
South Portland	Doug Howard	Public Works Director	767-7650
Standish	Gordon Billington	Town Manager	642-4659

## **Section E - Record Keeping & Reporting**

As a municipally owned facility, **ecomaine** is charged with providing information to its member communities for use in completing many State and Town reports. **ecomaine** provides monthly and annual reports to its member communities, but additionally offers to provide trend reports or develop reports with specific information upon request. Requests should be made to Lissa Bittermann, Manager of Business Development.

Shown in section D is an illustration of an **ecomaine** weight slip. Data collected is as follows:

- Date
- Time In
- Time Out
- Material Received
- Vehicle ID
- Origin of Materials (recycling): Example: Recycling Center, Curbside
- Transaction #
- Account #

**ecomaine** supports the EPA and The State of Maine's hierarchy of waste management:

- Gross Vehicle Weight
- Tare Weight
- Net Vehicle Weight
- Price Per Ton (MSW)
- Total Due
- Driver's name and signature
- Scale Attendant
- Facility name, address, and phone number

Slips are provided to drivers for record keeping; however, **ecomaine** maintains a copy of each weight slip and a database of information that can be provided to the MCSWC upon request. An invoice/statement for MSW, bulky waste, and recycling are sent at the close of each month. MSW and Bulky Waste invoice/statement includes: date, net weight and cost for each individual load. The recycling statement includes: date, material, transaction number, and net weight for each individual load.

## **Section F - Municipal Solid/ Bulky Waste and C & D**

### *Municipal Solid Waste & Tires*

**ecomaine** is offering two types of agreements for the processing of MSW. The first is for a term lasting anywhere from 5-20 years in length ( not beginning until 2018) and a tipping fee of \$70.50 per ton (plus an annual CPI not to exceed 7% every year after the first) would apply. The second, in case MCSWC would like to consider a more immediate option is for a duration of 3-5 years at a starting MSW tip fee of \$57.85 per ton with a CPIU Northeast annual adjustment, not to exceed 7% in any given year after the first. This tipping fee is for individual municipalities or groups of municipalities which intend to immanently enter into a formal agreement with **ecomaine** for the processing of their MSW.

**ecomaine** currently accepts tires as part of MSW loads. As a waste to energy facility, tires provide the benefit of raising the heat value of trash which benefits our processing, especially during winter months. For this reason, **ecomaine** is proposing that the Corporation add a total of **ten (10)** tires\*\* ( as described below) per load of MSW. This process of tire disposal would be effective for the full term of any agreement provided that the Environmental Protection Agency air emission standards do not change regarding **ecomaine's** ability to accept such material at its waste-to-energy plant.

**ecomaine** supports the EPA and The State of Maine's hierarchy of waste management:

**\*\*ecomaine** is able to accept automobile, pick-up truck, and small commercial truck tires. Our equipment is not designed to handle tractor-trailer truck, farm tractor, or heavy construction vehicle tires.

#### Bulky Waste & Mixed Demolition/Construction Debris

**ecomaine** accepts pure Bulky Waste at the Waste to Energy facility in an uncontracted manner for a fee of \$59.50 per ton. (see Section J for a full description of ecomaine's definition of Bulky Waste.) Should MCSWC wish to mix its Bulky Waste in with its MSW, this is permissible and the Bulky Waste would be considered MSW in terms of applicable tipping fees. **ecomaine** sub contracts with CPRC at Riverside located at 910 Riverside St. Portland, ME 04103 to accept mixed Demolition & Construction Debris for recycling, for a fee of \$65.85 per ton with an annual escalator of 3%. Should MCSWC wish to be able to mix its Bulky Waste and Demolition & Construction Debris, this mixed material could go to CPRC for their quoted rate \$65.85 + annual escalators. A separate contract would be signed between MCSWC and CPRC. A list of C & D materials that are acceptable at CPRC is attached in Section J.

#### Transportation

**ecomaine** does not provide in-house transportation for materials; but we will work with any and all haulers the Corporation deems in its best interest to engage. **However**, for this bid we have procured 3 hauling options for Mid-Coast Solid Waste Corporation's waste. All the quotes provided are with an origination point of MCSWC and a destination of ecomaine. The bids are from Wyndsaung Farm & Trucking (WFT), Thomaston Recycling Inc. and Troiano Waste Services. Should MCSWC select ecomaine as the vendor for the processing of MSW, it may elect to have the material transported by any of these haulers or a different hauler of their choosing; a separate hauling contract would need to be signed with the selected hauling vendor.

**1. Wyndsaung Farm & Trucking (WFT):** Haul rate is \$33.00 per ton (assuming 18, 20 or 22 tons per load, this equals a per haul rate of \$594, \$660 or \$726)

**2. Thomaston Recycling Inc:** \$475 per haul with an additional fuel surcharge of \$25.00 per trip for each increment of +.50 cents increase if gas exceeds \$3.50 per gallon

**3. Troiano Waste Services:** \$625.00 per haul plus fuel surcharge for 60 yard roll offs

\$550.00 per haul plus fuel surcharge for live floor trailers

**\*\*The Troiano fuel surcharge starts when fuel raises above \$3.25 per gallon**

**\*\*The Troiano formula for Fuel Surcharge for Long Hauls is calculated:**

**ecomaine** supports the EPA and The State of Maine's hierarchy of waste management:

**Total Miles:** 166 for the round trip haul divided by **AVG Mile Per Gallon of 4.5 gallons gives Gallons Used=** 37 x difference in cost of fuel above \$3.25per gallon (for example: if fuel is \$3.50) you would have 37 gallons x .25 cents= +\$9.25 fuel surcharge per trip.

## **Section G - Educational Outreach**

Educational outreach is a major part of **ecomaine's** recycling and waste reduction programs. Through the efforts of a full time, in house, Environmental Program Manager, **ecomaine** can assist municipalities and their residents in gaining the insights that can lead to shifting material out of the Solid Waste stream, which require tipping fees for disposal, to the Single Sort Recycling stream which the town is either paid for or pays either no or a minimal tipping fee to dispose of. In addition, many promotional materials to educate the public are made available to the Town free of charge. Some examples of these materials are listed below.

- Pre-printed Brochures about Single Sort Recycling.
- Do/Don't Single Sort Recycling lists on refrigerator magnets for residents
- Press Releases- news worthy items are submitted to your local paper to provide continued awareness of recycling and its benefits.
- Website Graphics- Customized for your Town.
- Scripts for local access TV spots to promote recycling.
- Public Service Announcements and videos provided to your local-access stations.

**ecomaine** also promotes recycling and waste reduction through educational outreach and special outreach programs. Some of these programs are:

- School general assemblies to promote recycling- K-12.
- In-class experiments- creating recycled paper; a hands on lesson.
- Service learning projects- Example: *How to Worm-bin Compost*, a book written and illustrated by the students at Lincoln Middle School.
- School Recycling or Environmental Club Support.
- Tours- open to students and the general public at no charge.
- Upon request, a recycling booth at Town and business events such as Voting and "Old Home Days" to help promote recycling and answer questions.
- Meeting presentations and/or outreach programs geared to adults, clubs and groups.

All Contract members also participate in **ecomaine** programs such as:

- eco-Excellence award (similar to a person of the year award, for being "green") - Each Town nominates and has a winner selected from the individual towns. The award winner is presented with an award at a luncheon. A press release is sent to the local newspapers.

**ecomaine** supports the EPA and The State of Maine's hierarchy of waste management:

- Annual **ecomaine** open house- This annual event is held at one of the three **ecomaine** facilities and is a great event to educate the public about what happens to their waste. 2011 and 2012 were at the Recycling Center.
- Annual **Recycling is a Work of Art** contest- In this program, groups (school, girl/boy scout, garden club etc.) from **ecomaine** member communities are encouraged to create a design having to do with sustainability to paint on 1 of 6 30 yard recycling containers which are part of **ecomaine's** fleet of 120. The six winning design entries, from school art classes, community groups etc. receive a large, silver **ecomaine** recycling trailer, and a \$500 budget for art supplies, a \$500 stipend, and the opportunity to transform the plain container into a work of art that transcends its waste-management role, emerging as a colorful, vibrant and powerful message about a community's efforts to divert material from the solid waste stream. The containers then go back out into circulation so they're on display for the public to enjoy as they serve their purpose of housing recyclables.

Our Environmental Program Manager and Communications Manager are here to assist your Towns in maximizing your potential savings and protecting the environment. These services are provided as value-added to the program and **ecomaine** requires ***no additional fees*** to utilize these resources.

## **Section I - Environmental Profile**

**ecomaine** consists of a waste-to-energy (WTE) facility, a Recycling Facility, and Landfill/Ashfill Facility. The WTE processes up to 550 tons/day of municipal solid waste (msw) which is converted into 100,000-110,000 megawatts of electricity per year. The electricity is then sold and **ecomaine** receives renewable energy credits. **ecomaine** continues to maintain both the ISO 14001 environmental certification as well as OHSAS 18001 for health and safety at all three of its facilities. Rigorous audits are conducted every six months by a third-party internal auditor and a registrar auditor qualified by the Registrar Accreditation Board. The WTE, Recycling Facility and the Landfill/Ashfill maintain all operational permits, and each permit contains numerous conditions and requirements, including monitoring, environmental testing and reporting for water, air and land.

The **WTE** of **ecomaine** maintains significant air pollution control equipment with continuous emissions monitoring systems (CEMS), continuous opacity monitoring systems (COMS), and continuous emission rate monitoring system (CERMS). The CEMS and CERMS monitor emissions from the WTE for sulfur dioxide (SO<sub>2</sub>), nitrogen oxides (NO<sub>x</sub>) and carbon monoxide (CO). While the COMS monitor for particulate matter (PM) for levels of opacity. The removal and neutralization of acid flue gases (SO<sub>2</sub>, HCl) is achieved by lime slurry sprayed by the scrubbers and (NO<sub>x</sub>) from urea injected in the furnace with the selective non-catalytic reduction (SNCR) system. Mercury (Hg) and dioxin/furan are mitigated by injecting powder activated



**ecomaine** supports the EPA and The State of Maine's hierarchy of waste management:

carbon. Pollutants are removed as the flue gas travels through the five-field electrostatic precipitator (ESP). **ecomaine's** air pollution control technology (APCT) has 99% removal efficiency resulting in cleansed flue gas – free of pollutants - that are released through the stack. Annually **ecomaine** conducts and reports to the EPA and MDEP the results of numerous air emission tests including opacity and cylinder gas audits (CGA), compliance stack tests and relative accuracy test audits (RATA).

The **Recycling** Facility receives, conveys, sorts and processes recyclables at a state-of-the-art "Single-sort" recycling system, which began operation in May 2007. The system sorts a variety of recyclable materials such as paper, cardboard, plastic, glass and metals. Since the installation of the single-sort system, **ecomaine** communities have increased their recycling volume from 25,000 tons to over 40,000 tons.

The **Landfill** was established in the 1970's to receive municipal trash from the owner communities of **ecomaine** (formerly RWS). The landfill comprises 250 acres located partly in South Portland and in Scarborough. When the waste-to-energy plant was brought on-line in 1988, the Ashfill began accepting the ash by-product residue from the WTE plant. Each year, approximately 50,000 tons of processed ash is deposited at the ashfill. In 2012 **ecomaine** began an ash metals mining project to recover ferrous and non-ferrous metal from the stored ash. Not only is **ecomaine** earning revenue by selling the scrap-metal but it also benefits by freeing up additional "air space" for future disposal of ash. Beyond the production of renewable energy, the other benefit of waste-to-energy is the reduction in volume of the msw by 90%, which translates into the ash occupying just one-tenth the amount of space required to landfill traditional msw. The **ecomaine** service area can anticipate longevity of their disposal needs of residual waste well into the future while other communities prematurely fill their limited landfills with unprocessed raw msw 90% faster.

#### **ecomaine Awards**

- 2009 – ASME Award for Small Facility Category **ecomaine's** recycling program and integrated solid waste management approach for the communities it serves.
- 2009 – Environmental Merit Award presented to the 32 members of the Long Creek Restoration Project by EPA Region 1.
- 2008 – Shape Award, Safety & Health Award for Public Employees Awarded to **ecomaine** from the Maine Department of Labor.
- 2008 – *Team Up!* competition for environmental sustainability sponsored by Institute for Civic Leadership (ICL) and won by the **ecomaine** team.
- 2006 - Solid Waste Association of North America (SWANA) named **ecomaine** the winner of its Waste-to-Energy Silver Excellence Award.

**ecomaine** supports the EPA and The State of Maine's hierarchy of waste management:

- 2006 – Shape Award, Safety & Health Award for Public Employees Awarded to **ecomaine** from the Maine Department of Labor.
- 1992 – SWANA Recycling Excellence Awards Program.
- 1992 - Broderson Awards *Bronze* Awarded to RWS.
- 1992 - Golden Arrow Awards – Recognition of Achievement.
- 1991 – SWANA Waste-to-Energy Excellence Awards Program.
- 1991 – Broderson Awards *Silver* Awarded to RWS.
- 1991 - Golden Arrow Awards – Recognition of Achievement.
- 1989 – Maine Association of Planners Award – Recognition of Contribution.
- 1986 – FAME, Field of Economic Development – Recognition of Contribution.

## **Section J – Acceptable Waste Lists**

### Acceptable Municipal Solid Waste

Acceptable Waste means ordinary household, municipal, institutional, commercial and industrial unwanted or discarded solid material with insufficient liquid content to be free flowing, including, but not limited to, the following:

1. Garbage, trash, rubbish, scrap materials, junk, paper and cardboard, plastics, refuse, beds, mattresses, sofas, washing machines, bicycles, baby carriages, and automobile or small vehicle tires, to the extent that **ecomaine** determines that the air emission criteria and standards applicable to and at the facility are not violated; and
2. Processible portions of commercial and industrial solid waste; and
3. Residential quantities of wood and lumber, tree limbs, branches, ties, logs and trees, if no more than four and one-half (4.5) feet long and eight (8) inches in diameter, and leaves, twigs, grass and plant cuttings.

ecomaine supports the EPA and The State of Maine's hierarchy of waste management:

### ecomaine Bulky Waste Description

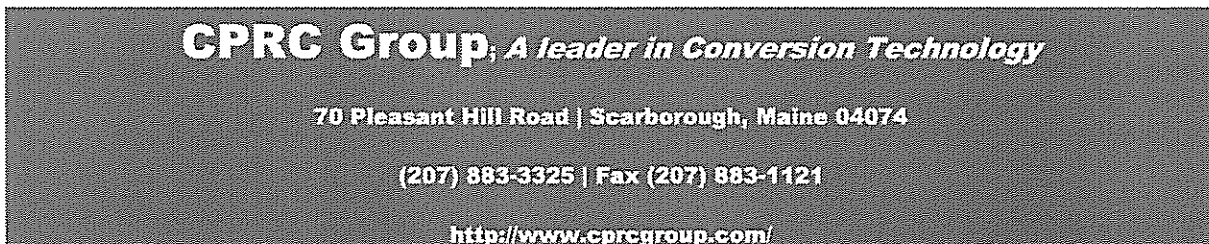
ecomaine accepts the following bulky waste materials at the waste to energy facility. It should be understood that some materials listed below could be considered MSW under the previous acceptable waste definition.

ecomaine Bulky Waste Includes:

- Large furniture
- Couches & sofas
- Large plastic items
- Plastic film such as tarps, boat covers, large plastic bags
- Area rugs, and carpet
- Dressers, desks, and tables
- Wood, lumber, plywood, 2x4's, etc. (no wallboard or sheetrock)
- Counter tops & cupboards
- Wood doors
- Composite wood lumber
- Large bulky plastic toys
- Outdoor plastic furniture
- Mattresses & box spring (no more than 10 per load)
- And other combustible materials

ecomaine Bulky Waste should not be confused with the traditional definition of Construction and Demolition Debris. Because ecomaine is a waste to energy facility we are unable to accommodate all Demo Debris. The materials listed in the following section are acceptable as Construction and Demolition Debris at CPRC.

### CPRC Construction & Demolition Waste Description



**CPRC Group**, *A leader in Conversion Technology*  
70 Pleasant Hill Road | Scarborough, Maine 04074  
(207) 883-3325 | Fax (207) 883-1121  
<http://www.cprcgroup.com/>

## **Asphalt Pavement, Concrete & Bricks**

We convert the following waste materials into usable products:

- Asphalt pavement
- Concrete
- Brick

**ecomaine** supports the EPA and The State of Maine's hierarchy of waste management:

- Stone tailings
- Rock
- Ledge
- Miscellaneous aggregate-based material

## **Asphalt Roof Shingles**

We accept all residential and commercial roofing that meets the following standards:

- Residential asphalt shingles of any size, shape and color. Tar paper and nails accepted.
- Commercial asphalt roofing material requires pre-qualification testing for asbestos. We can arrange asbestos testing for an additional fee. Or you can present documented proof of asbestos testing and sign a pre-qualification form.

## **Catch Basin & Sand Blast Grit**

Our Maine DEP Processing Facility License (#S-021243-WK-A-N) allows us to convert these special waste materials into road building materials.

## **Demo Wood, Clean Wood, Brush & Yard Waste**

We convert these waste materials into usable products:

- Stumps
- Branches
- Wooden pallets
- Demo wood
- Clean wood
- Leaves
- Brush
- Grass clippings

## **Gypsum Board**

We accept gypsum board that meets the following specifications:

- Any size or shape without paint or wallpaper. Plaster is not acceptable.

Loads delivered to our Scarborough or Portland, Maine facilities have to be free of contamination such as wood, cans, paper and other types of debris.

A processing and handling fee is added for contaminated loads.

## **Glass & Porcelain**

Whether commingled or separated, we accept these glass and porcelain materials:

- Drinking glasses
- Ceramic or glass tableware plates, cups, mugs & bowls
- Ceramic or glass cookware
- Mirror glass
- Plate glass
- Miscellaneous household glass vases, mixing bowls, measuring cups, canning jars, etc.

**ecomaine** supports the EPA and The State of Maine's hierarchy of waste management:

- Ceramic tiles
- Ceramic sinks, tubs and bathroom fixtures
- Automotive windshields and other tempered glass

We do not accept:

- Containers that once held hazardous products
- Automotive headlamps
- Incandescent light bulbs (residential only)

### **Inert Materials (unscreened loam)**

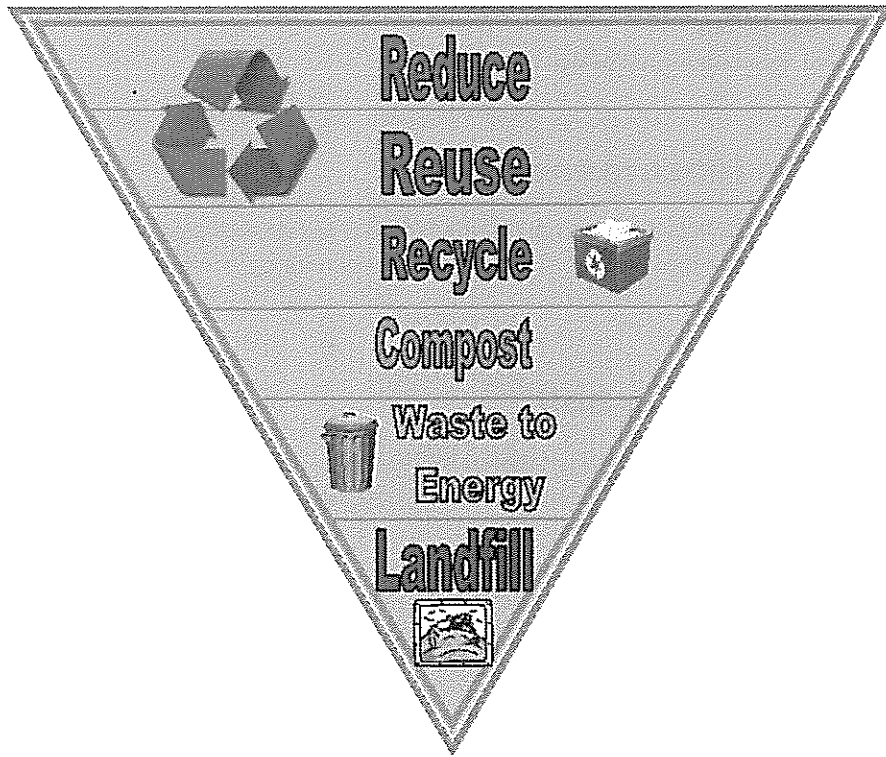
- We accept inert materials such as unscreened loam that contains stone, rock, ledge, concrete, brick and asphalt pavement debris. These materials cannot be contaminated with petroleum or hazardous waste.

### **Petroleum Containing Soil**

- Our Maine DEP Processing Facility License (#S-021243-WK-A-N) allows us to process soil from DEP supervised and non-supervised spill sites where heating oil, motor oil and waste oil have penetrated the soil.

ecomaine supports the EPA and The State of Maine's hierarchy of waste management:

**eco**maine



**ecomaine** supports the EPA and The State of Maine's hierarchy of waste management:

